

# EASY PULL TRAVERSE HARDWARE COLLECTION



## EASY PULL REFERENCE GUIDE

Finish Name	Component Color	Available with Rings	Villabella 2 1/4" Fluted Pole	Palazzo 2" Smooth Pole (ringless only)	Max Continuous Length
<b>Villabella 2 1/4" Finish</b>					
Glow	Bronze	•	•		12'
Limestone	Gold	•	•		12'
Mottled Gold	Gold	•	•		12'
Wood Crackle	Bronze	•	•		12'
<b>Palazzo 2" Finish</b>					
Bronze d' Ore	Gold			•	12'
Chestnut	Bronze			•	12'
Noir	Bronze			•	12'
Rosewood	Bronze			•	12'
<b>Riviera 1" Finish</b>					
Black	Bronze	•	•	•	12'
Gossamer	Bronze	•	•	•	12'
Latte	Gold	•	•	•	12'
Titanium	Bronze	•	•	•	12'
Urban Bronze	Gold	•	•	•	12'

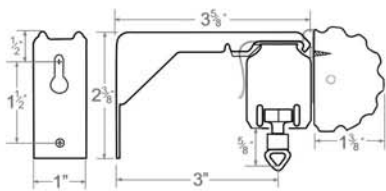
**Note:** Finial and rod selections must be from the same collection. Finishes should be from the coordinating rod collection or you may substitute a finish from the Riviera 1" collection.

## PRODUCT INFORMATION

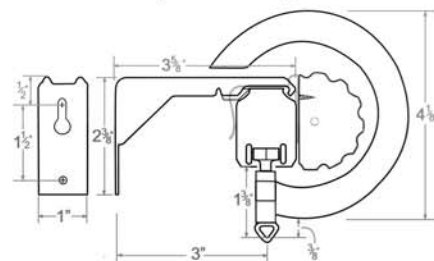
Quantity per System (Based on length)	4'	5'	6'	7'	8'	9'	10'	11'	12'
<b>Glides/Rings</b> (Where applicable)	16	20	24	28	32	36	40	44	48
<b>Brackets</b> (Standard or extended)	2	3	3	3	4	4	4	5	5

**Note:** Traverse System includes 4 glides/rings per foot. The number of glides and rings shipped may not equal the amount required for the width of your panel(s). If more glides or rings are required, these may be purchased a la carte.

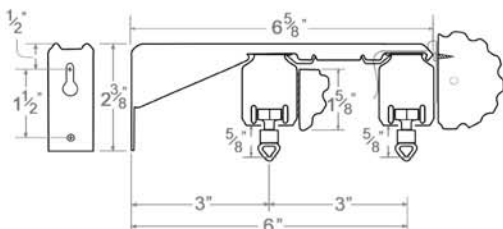
Single Traverse without Ring



Single Traverse with Ring



Double Traverse without Ring



Double Traverse with Ring

